



Department of Education and
Early Childhood Development

Kambrya College (8421) - Kambrya College

2014 Parent Opinion Survey Report

Where provided, hand-written comments from parents in the Comments Report are also available from the School Performance Reports webpage (principal's edumail login and password required)

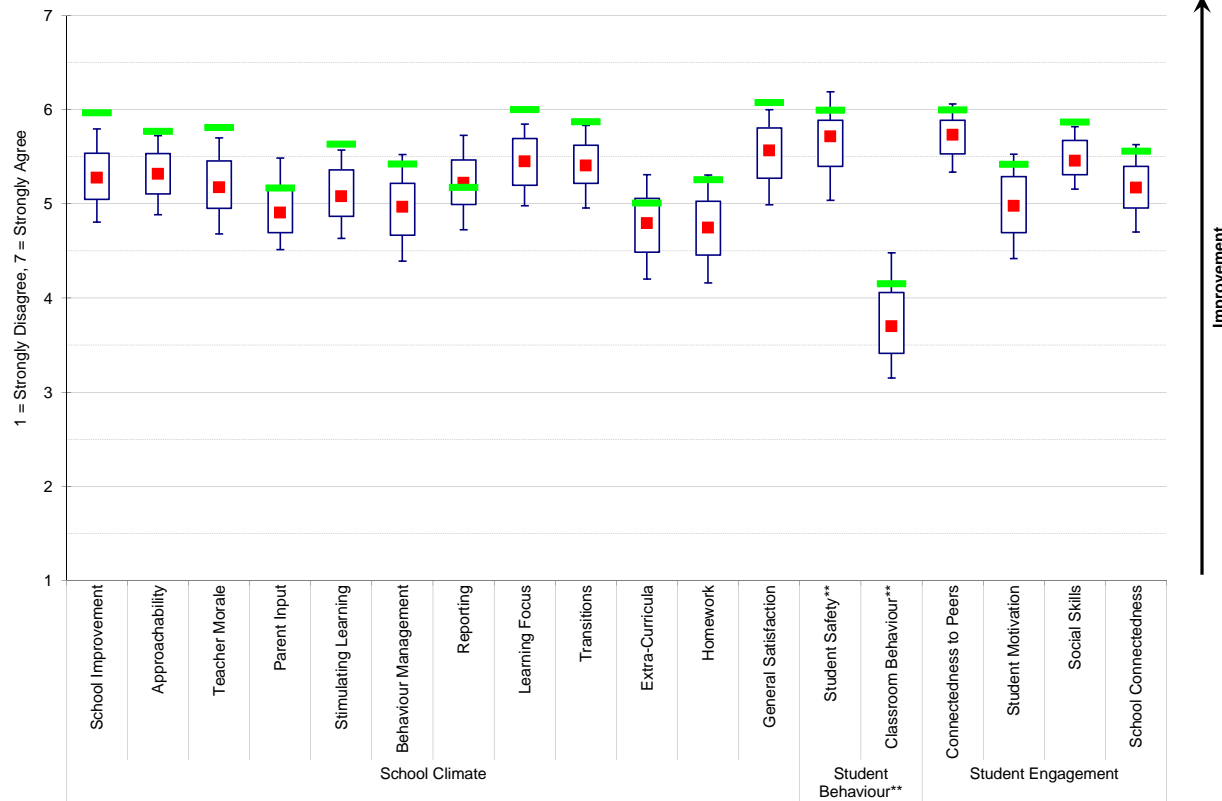
2014 Parent Opinion Survey

School Number: 8421

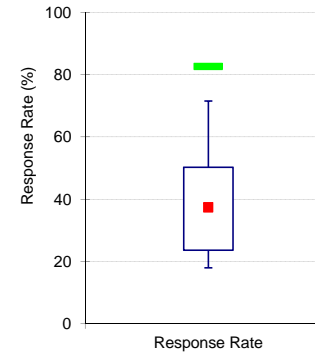
School Name: Kambrya College

2014 Data against Secondary School benchmarks

School means plotted against distribution of Secondary School means



School response rate against Secondary School distribution



Recommended sample size: 156
 Number of questionnaires sent*: 150
 Number of questionnaires returned: 124
 Response Rate: 83%

Legend:

- 90th Percentile
- School
- 75th Percentile
- Median
- 25th Percentile
- 10th Percentile

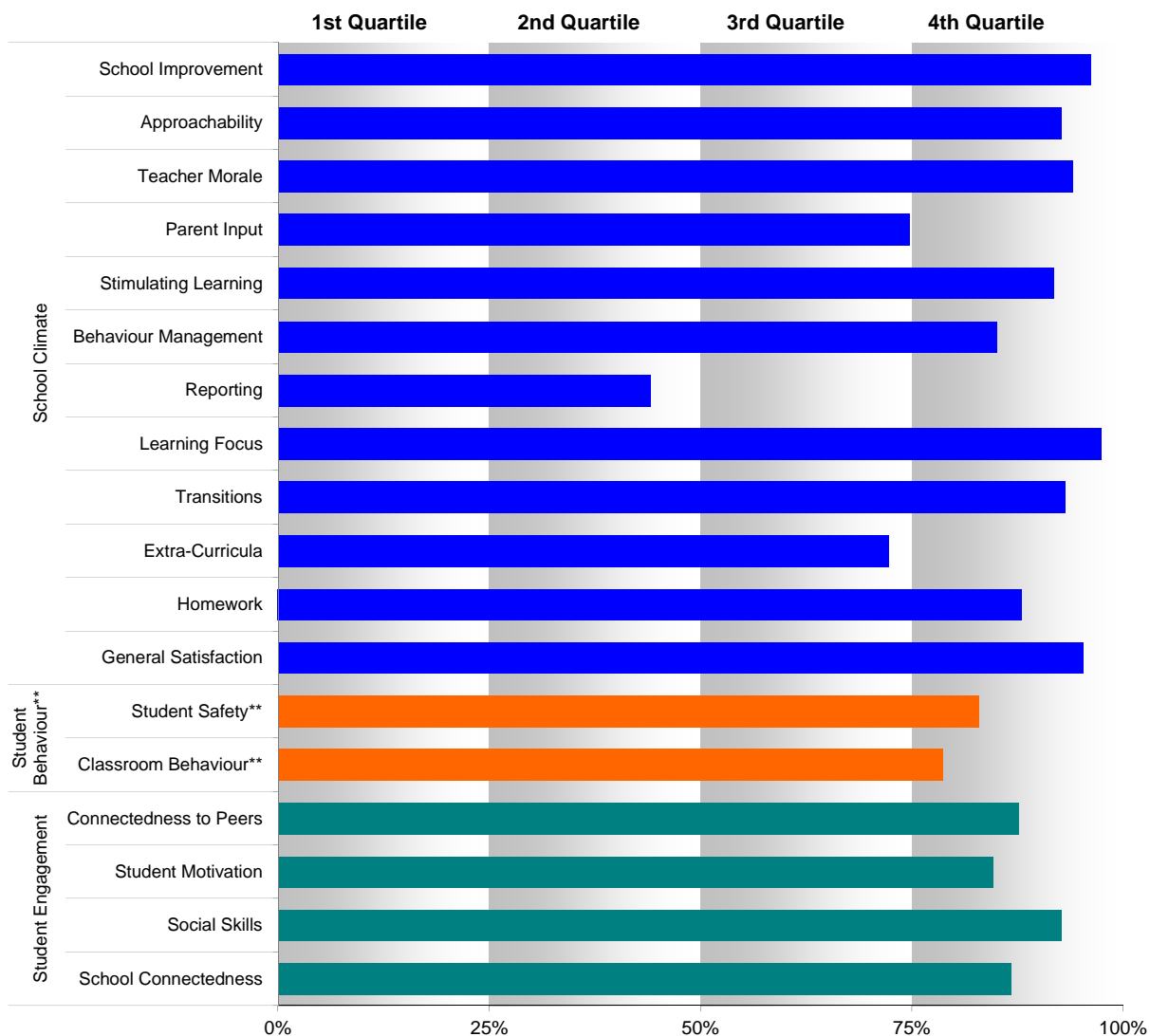
* The "Number of questionnaires sent" is taken from the tally sheet returned with each school's questionnaires. If the tally sheet was not completed, the number is not available.

** Parents' responses to all negatively phrased questions have been reversed for reporting purposes. Across all variables, the higher the score or percentile rank, the more positive parents' perceptions.

School Number: 8421

School Name: Kambrya College

School means plotted as percentage ranks against Secondary School means



** Parents' responses to all negatively phrased questions have been reversed for reporting purposes. Across all variables, the higher the score or percentile rank, the more positive parents' perceptions.